

**"WHERE YOUR TREASURE IS . . .
THERE WILL YOUR HEART BE ALSO"**



**WHAT WILL BE
MY SACRIFICE?**

**ST. GABRIEL'S CONGREGATION
PRAIRIE DU CHIEN, WISCONSIN
1956**

The pages that follow will open the gates of a new life to us as Christians and a vision of our responsibility for the future of our church. It will present a challenge for tomorrow. This booklet is affectionately dedicated to the laymen and laywomen of St. Gabriel's Congregation. By their vision and faithfulness, as well as by their sacrificial giving, they show their love for God and man.

For Where Your Treasure Is, There Will Be Your Heart Also . . . Luke 12:34



A Message From Our Pastor

My Dear Parishioners:

From time to time you have been advised from the pulpit and in our bulletin of the financial position of our parish. You are also well aware of our present need for additional facilities, both to our school and Church. Now we are to the point where we must find out how much money we can anticipate receiving each year so that we can proceed to plan for our building program and other needs.

As we enter into this great program together, each of us must try to do whatever we are asked to do willingly, thoroughly and promptly, in accordance with this plan. We can and will succeed in our efforts to raise the maximum amount possible for our school to the degree in which we believe in Faith, Prayer and Sacrifice.

Faith—in the need and our ability to meet the need.

Prayer—the collective and individual prayers of all our members and friends;
and

Sacrifice—of our time, our funds and our opinions.

This canvass will surely have God's Blessing. It is fundamentally Catholic. It is based upon the need for greater interest and service in the Faith.

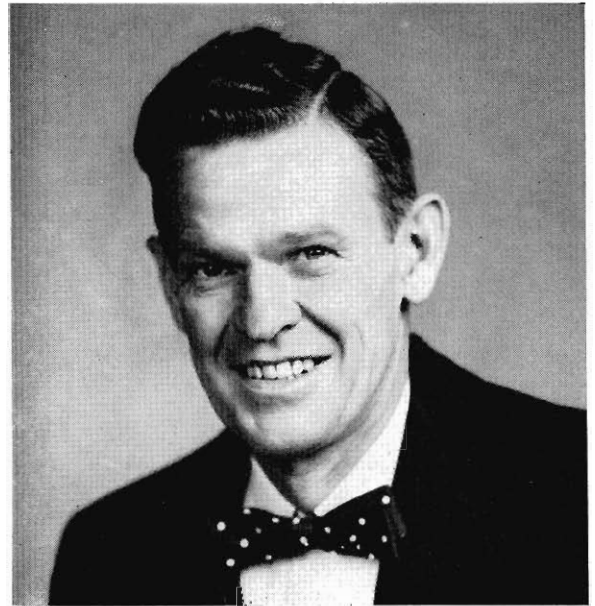
Sincerely yours,

Earl L. Burns, S.J.

To Do Our Part



DR. T. F. FARRELL M.D.
General Chairman



A. D. LACKE
Chairman of Canvass Advisory Committee

Dear Friends:

We have now reached that time when we of St. Gabriel's congregation are actually beginning the drive which I know will be the successful culmination of all our hopes and prayers these many years. A canvass to raise the \$250,000 that is necessary to provide the new educational unit that we are all aware of being so urgently needed.

During the past few weeks the framework of leadership and the methods of conducting our campaign have been carefully prepared so that now with the enthusiastic help of every loyal member, both young and old, of St. Gabriels parish we can push forward and make our previous hopes and dreams an actual reality. The job will not be too great or difficult with everyone contributing his share in effort and enthusiasm.

Let us all unite in this one big common resolve to meet the first big challenge that St. Gabriel's parish has ever had put to them with our maximum effort and our mutual prayers and I am convinced we can accomplish our goal.

Sincerely yours,

A handwritten signature in cursive script that reads "T. F. Farrell M.D.".

T. F. Farrell, M.D.

The Story of our Church and school has been one of dynamic growth. Throughout the history of our Church, our Parish has met the challenge of changing times, sometimes suffering, but always triumphing in the end.

Challenges arise, problems are posed and both are met and solved through the dedicated work of all the people of the parish.

Our problem now is that of physical facilities which are inadequate to minister effectively to the spiritual needs of a steadily increasing Catholic population in our Parish.

Crowded class rooms demand the immediate erection of new classrooms and improved general facilities. Our children must not be denied the benefits of the adequate classrooms that are so necessary to fit them for their stations in life.

Through the united effort of all of us, and with God's inspiration and help, we shall successfully meet the challenge to the greater glory of God and the benefit of man.

A handwritten signature in cursive script that reads "A. D. Lacke".

A. B. Lacke
Chairman, Canvas Advisory Committee

Our Canvass Leaders



Loren Small
Initial Gifts Chairman



Robert Halverson
Canvass Committee Chairman



Ray Weighner,
Special Gifts Chairman



John Krey
Terms Chairman



Gordon J. Bowar
Arrangements Committee
Chairman

Here are but a few of our Canvass Leaders. In a sense they are but symbols of scores of faithful men and women of St. Gabriel's Congregation who will dedicate the coming days, set aside large blocks of time from already crowded schedules, and give of themselves without stint or measure, to the inspiring challenge of this great hour in the history of our parish.

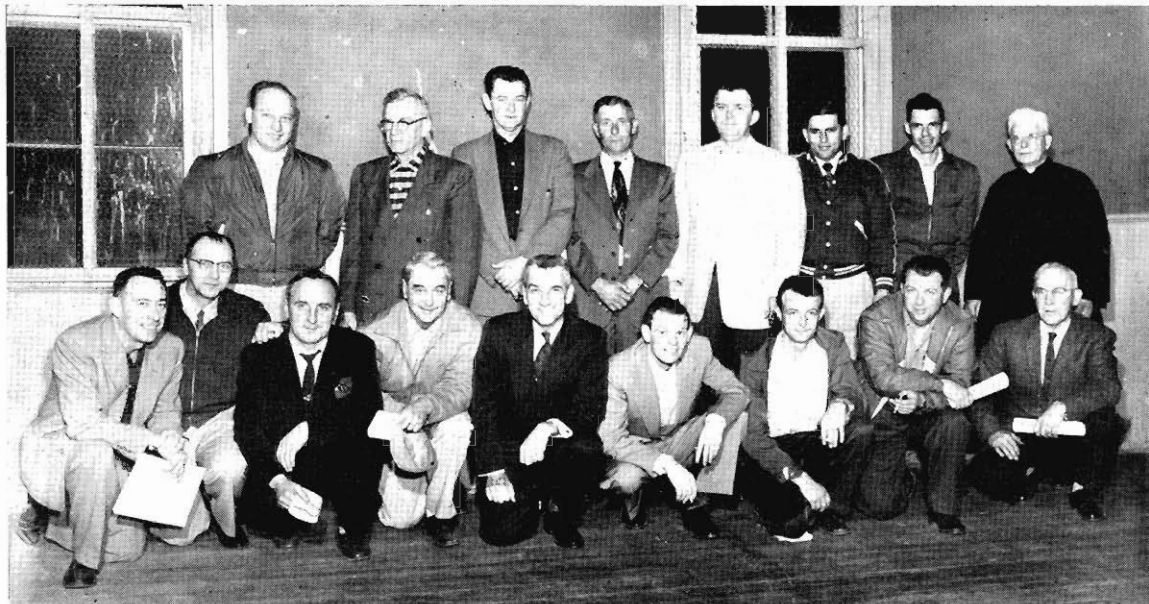
We now enter a new era in our development, one that imposes the greatest

possible test of faith. Through this effort we will seek increasingly to translate the Will of God into the minds and hearts of our children and to men and women as well.

Our Church leaders inspire us: they lead us to new heights of achievement in this forward step for God.

Great vision, dedication, and a spirit of sacrifice on the part of the members of St. Gabriel's Congregation, will bring our plans and hopes to fulfillment.

Canvass Advisory Committee



Back Row: R. Halverson, F. Keating, F. Finley, T. Zinkle, G. Bowars, R. Rink, V. Hill, Fr. Burns. Front Row: E. Farrell, W. Fisher, L. Lipke, E. Brunet, F. Antoine, A. Lacke, H. Lochner, N. Day, E. Bastel.

Canvass Committee



Back Row: D. Delurey, E. Bastel, H. Zabel, D. Knapp, E. Favre, H. Lochner, D. LaBonne, K. Loney, J. Valley, F. Keating, A. Gillitzer. Middle Row: H. Maher, H. DuCharme, E. Flitsch, J. Delurey, D. Sherman, N. Day, W. Quinn, N. Knapp, L. Zabel, J. Matousek, T. Zinkle, A. DuCharme, C. McGrath. Front Row: R. Tesar, B. Gillitzer, F. Antoine, G. Bowar, R. Halverson, T. Farrell, Fr. Burns, A. Lacke, J. Krey, R. Weighner, L. Small, J. Valley.

A Bit of Our Church and School History

One hundred and forty years ago on Apr. 17, 1816 a priest came to Prairie du Chien who was destined to establish a Catholic parish at this place.

Father Marie Joseph Dunand, a Trappist, came here from St. Louis full of zeal and religious fervor and was well prepared for the mission. He said his first Mass here on a Friday in April, 1817 in the Fourth Ward of this city (it was the main village then.) He stayed a month and organized the people into a congregation.

It was 10 years later on May 21, 1827, that Father Francis Vincent Badin arrived from Detroit. He established himself in the hospital part of Old Ft. Crawford where he sang High Mass and conducted his services. On June 8, 1827, people were cutting logs to build a church 50 feet long, but the Winnebago war interrupted the work.

Fr. Mazzuchelli said he had to hire a house to say Mass in 1832. But, Bishop Loras says, "they gathered in a house which served as a chapel and went from there to lay the cornerstone of a church," indicating that a log building may have served for a church. The Badin house marks the place that Fr. Galtier kept his horse and is the likely site of the log church if there was one.

Fr. Mazzuchelli's first visit here was on Sept. 21, 1832. He and Judge Doty came on horseback from Green Bay and spent 15 years and were encouraged at the prospects of the parish. It is likely he suggested the name of St. Gabriel's, for in Bishop Rosati's report in 1938 it was so called. On his second visit in the winter of 1834-35, he stayed about three months. During his third visit in February, 1836, he acquired the present site of St. Gabriel's church.

On the first visit of Bishop Loras, July 14, 1839, the cornerstone was laid for a rock church 100 feet long and 50 feet wide. Just when the building was finished is not certain. Bishop Henni, on his first visit in

1834, said it was not finished but had a debt of \$3,000.

Father Galtier said in his diary that it took 18 years to complete it. The building of this church was a difficult task.

Fr. Mazzuchelli tells of organizing an aid society. Men were to pay 50 cents per month and women 25 cents. Fr. Mazzuchelli lived to see his people at Prairie du Chien become a vigorous and strong congregation.

Fr. Dunand, the founder, Fr. Badin and Fr. Mazzuchelli may be considered the builders of the parish, although Fr. Cretin is given the most credit for awakening the faith and building up the congregation spiritually during the years between 1839 and 1844. Fr. Galtier ministered here for 19 years and finished St. Gabriel's.

As early as 1840 sisters have been in Prairie du Chien. From 1857 until 1862, the Dominican order kept a school here. In 1869 the Franciscans opened a school for St. Gabriel's parish. They also kept a separate school in the Old Prairie House. In 1872 the catholic school came under and is still under the Notre Dame Sisters.

Other changes were made about 1850. Father Cretin put a spire on the church. In 1847 a parish house, still in use, was built. In 1871 St. John's college was begun in the Brisbois hotel and was closed in 1879. In 1880 the Jesuits took over from the Benedictines who had charge of St. Gabriel's for four years and began in the same building Campion Jesuit school.

In 1889, under Jesuits, a new tower was built on St. Gabriel's. St. Gabriel's came under secular priest in 1891. In 1908, a new front with two spires and interior changes were made and in 1935 a new school building hall was erected. The Jesuits returned to St. Gabriel's in 1916 and still have a pastor and assistant in charge, Rev. Earl L. Burns S.J., and Rev. Joseph P. Melchior, S.J.



**Church Members Owe a Debt to These---
Let Us Not Fail Them.**





**Our School Facilities Must Be
Modernized and Expanded.**



Hostess Committee



Mrs. Loren Small
Co-Chairman



Mrs. Vern deLorimier
Co-Chairman



Front Row: Sullivan, Dagnon, Finley, Lochner, Halverson, Bower, McClure, Sletmark, Schweiger. Second Row: Cherrier, Maher, Zinkle, Garrity, Lacke, Quinn, Hill, Favre, Farrell, Fernette, Bock. Third Row: Antoine, Farrell, Farrell, Hoffman, Dobbs, Steiner, Gebel. Fourth Row: Daley, Coorough, Zabel, Cardine, Nolan, Gentes. Top Row: Gillitzer, Zwingle, Zabel, Collins, Delurey, Dohse, Small, Kuckenbecker, Bastel, Campbell, Voth, Burke, Keating, DuCharme, Brunet, deLorimier, Fr. Burns.

Our Canvass Plan

Canvass Building Fund Goal

In order to raise \$250,000.00, which is our Canvass Combined Funds Goal, it has been agreed that we will conduct between now and May 13, 1956—

An ORGANIZED

INTENSIVE

FACE-TO-FACE

SOLICITATION IN THE HOMES

FOR COMBINED FUNDS PLEDGES

OVER 100 WEEK PERIOD

BEGINNING MAY 13, 1956

Solicitations will be limited to member-families, prospective church members, parents of School children, and any other persons and families who consider themselves affiliated with our Church, but who are not technically members.

Individual face-to-face solicitation means that there will be no solicitation in groups or meetings nor will any solicitations be conducted by mail. Instead, a sufficient number of our Church men have been enlisted, qualified and organized as canvassers to visit and solicit each family of the Church individually and privately.

The intensive aspect of this Canvass means that we will concentrate our efforts to obtain pledges from every member-family during an intensive two-week solicitation period, which will avoid the necessity for a long-drawn-out follow-up program.

This will be primarily a Canvass for 100 week pledges. Families pledging less than \$1,000 will be encouraged to use the weekly payment method. Contributions and even initial cash payments on pledges will be discouraged during the Canvass period. The use of pledges over a 100 week period is a basic requirement of this Canvass, because it has been proven many times that the only manner in which the members and friends of a Church of this size can provide \$250,000 for such a program is not by cash contributions, but by subscription to the payment of SACRIFICIAL amounts weekly over a two-year period.

Our Trustees



Edward G. Farrell
Trustee

Dear Friends:

We have now reached that time when we of St. Gabriel's Church are actually beginning the drive to which so much prayer and thought has been given. The canvass to raise a minimum of \$250,000.00 to pay for our new school and church budget.

We have the leadership and the plans, and based on the past record of generous giving, and the spirit of cooperation well known to all, we are going to make this canvass a complete success. It is a call to Catholic action which offers each an opportunity to measure up to our christian obligation and responsibility.

It is our earnest desire and prayer, that each member shall experience new spiritual growth in their own lives by lending themselves whole heartedly to the great task before us, and with this objective in mind, we seek your loyal co-operation.

Sincerely yours,

A handwritten signature in cursive script that reads "Edward G. Farrell".

Edward G. Farrell



F. J. Antoine, Jr.
Trustee

Dear Fellow-Parishioner:

For the past several years, all of us have realized the pressing need for a new school at St. Gabriel's, and more recently we have become increasingly aware of the many other needs of our parish. A new school is dear to the hearts of all who love St. Gabriel's, but we must not allow ourselves to lose sight of the many other day to day needs.

We have now been presented with the opportunity to realize the fulfillment of our hopes and desires, and at the same time show the measure of our love for our Parish.

However, the accomplishment of the task before us will not be easy, and is necessarily dependent upon the cooperation of every member of St. Gabriel's. The solicitor who will call upon you is not working for himself, but is freely giving of his time and effort for the love of God and for our children. He will have already made his personal sacrificial pledge before he calls. You can lighten his task by your friendly greeting and willing cooperation.

Please bear in mind that your gift is not only to St. Gabriel's Church and School, but is in truth a gift to God, and that God will not be outdone in generosity.

When the present canvass has been completed, may we all be able to rejoice that it was an outstanding success.

Sincerely yours,

A handwritten signature in cursive script that reads "F. J. Antoine Jr".

F. J. Antoine, Jr.

Yes! It Can!

Three Things Can Change It:

Faith

. . . in our Church — in our God to bless our work. In ourselves — that we can build a new School. That we will build it by our own efforts, and by God's help.

Prayer

. . . we will pray for the success of our canvass, because we believe that only through prayer can we draw down strength from the heart of our Father in Heaven to do great things for Him.

Sacrifice

. . . with a strong faith, and continual prayer, we will be ready to sacrifice in order that our dream of a new School may become a reality.

A Letter From Our Principal

Dear Parents:

For the past several years the increasing enrollment and the expressed desire of more parents to enroll their children in our school has made us realize the trust and confidence placed in our teaching. We deeply appreciate your strong faith and high regard for Catholic Teaching in a school where love of God and country are inculcated as fundamental principles of Christianity and good citizenship.

We further appreciate the sacrifices you have made to help us maintain the high level of your ideals. Yet, we also realize the inadequacy of our educational facilities to meet this ever increasing enrollment and our inability to cope with this problem by ourselves. You are now being called upon to cooperate in the true spirit of sacrifice to meet our present and future needs.

It is not necessary for us to point out the many problems and difficulties that confront us. Most of the class rooms are tasked to capacity. All grades from one to six have no lavatory facilities with the building, but must transfer to the other building for the same. Aside from the time element involved in dressing and undressing children for an outside passage, which is most inconvenient, it is quite outmoded to transfer a whole class at one time to the lavatory in the dead of winter. We believe that there are few who are not acquainted with the inadequacy of our heating system either in the class rooms or auditorium, of the need for better lighting, and the difficulties encountered in a crowded class room.

The oft repeated expressions of our need for a new school and better facilities for your children lead us to believe that you will further make whatever sacrifices necessary to attain this goal. On our part we assure you of our continued sacrifices and prayers to be worthy of that trust and confidence you have placed in us in the care of your children.

Sincerely in Our Lady,

Sister Mary Conrad, S.S.N.D.

Sister Mary Conrad, S.S.N.D.



Our Responsibility

There is nothing complicated or high pressure about our finance plan. We are simply asking that every member and friend of the Church set aside a generous and sacrificial portion of their income each week for a period of 100 weeks, and that they give the Church a true priority on their contributions during that period of time.

Beginning about the time you receive this booklet, every family in any way affiliated with St. Gabriel's will be visited and given an opportunity to invest in this great program.

Payment may be planned according to the wishes of each individual subscriber. Since the total needed for our program is a large sum if thought of in terms of cash gifts, we would jeopardize the probability of attaining our goal by attempting to make total gifts in cash. Total gifts can be much larger if weekly payments are kept in mind. For just as it is easier to make larger purchases on the installment plan, so it is easier to make gifts in the amounts needed on a weekly basis.

Pledge cards will be presented to members. It should be remembered that making a pledge in this canvass is not like signing a note for the amount subscribed. We are simply asking that you indicate on the pledge card how much you feel you will be able to give during the two-year period.

How To Make Our Gift

In the careful — and prayerful — consideration of “How much shall I give?” think of several points, for the size of our pledges will depend upon:

1. Our Christianity.
2. Our interest in the Church and School Program.
3. Our recognition of the need.
4. Our financial ability.
5. Our method of paying the pledges.
6. Our willingness to sacrifice.
7. Our desire to encourage others to sacrifice.
8. Our willingness to trust God and believe His promises.

One of the greatest experiences in the life of a Christian is that of helping to build a school and widen facilities — debt free — to extend the services of his church in the community. To do this is to widen one's own horizon of Christian living and fellowship.

Until we have made an investment in our Church, we are more or less accepting the farsighted charity of others every time we or our children use a church.

Remember that the greatest effect on sacrificial pledging is upon the donors themselves. The spiritual value of sacrifice has been known to man since before Christianity.

There would be no Christians today if it were not for the great sacrifice of our daily Christian leaders. You and your family are requested to begin now giving serious, prayerful consideration to the amount you will endeavor to contribute to our Church.

A fellow-member, who has made his pledge, will call at your home prior to May 13, 1956 with a card for your pledge.

Your Church does not challenge your ability to give — it challenges your willingness to give as a follower of Jesus Christ.

How Much Shall I Give?

Raising \$250,000.00 in combined funds pledges depends entirely upon the size of pledges, because the number of potential subscribers is automatically limited to our member families and others who are interested in our Church activities.

There will be no high pressure solicitation, but instinctively we will not pledge more than a fraction of the amount to be raised unless we recognize that:

- (1) “Giving is a habit — usually a weak token-giving habit;
- (2) “Pocket-book protection” is an instinct — usually a strong one;
- (3) Our interests follow our dollars — better-than-token giving will help increase our interest in our Church and even more important — in our spiritual lives;
- (4) It is easy to criticize, but hard to give sacrificially;
- (5) Until a Christian family has made at least one sacrificial gift to the building of some Church, the members of that family are impoverishing their Christianity every time they use any Church building because they are content to live by what others have done without accepting responsibility themselves — they are “taking a ride.”

In the final analysis, the amount of my gift, considering my means, comes down to the question of how I feel about God and His Church.

I shall know that I have given enough when I feel that I do not have to apologize for my gift to God or man.

It is our hope to provide for our Church as we have been provided for. In proportion to our giving ability — let us give.



If We Have Faith . . .

"For truly I say to you, if you have faith as a grain of mustard seed . . . nothing will be impossible to you."

If we have to grasp our opportunity, if we love our Lord and His Church, if we honestly wish to fulfill our mission as a Church, we can, within the next few weeks, make sure that we build soundly and well.

Let it be said of St. Gabriel's Congregation that in great faith her people made sure that the future of the Church was safeguarded by building for the needs of all of our people.

We should pray earnestly that the members of our congregation will unite in generous support of this program for the strengthening of God's Church in this place and that together we may find much joy in His service.

And, remember, it is not "how much our Church needs" but rather **HOW MUCH OUR MEMBERS NEED TO GIVE.**

The Prayer Pledge

At each evening meal between now and the end of the canvass let each family pray that our canvass may be successful if it be for (1) the **GREATER HONOR AND GLORY OF GOD** and if it be according to his Holy will (2) that **THROUGH OUR EXAMPLE AND PRAYERFUL SACRIFICE** industry may be attracted to our city to give steady employment to all our people.

Dearest Lord, teach me to be generous. Teach me to serve Thee as Thou deservest, to give and not to count the cost, to fight and not to heed the wounds, to toil and to seek for rest, to labor and not ask for reward, save that of knowing that I am doing Thy will.