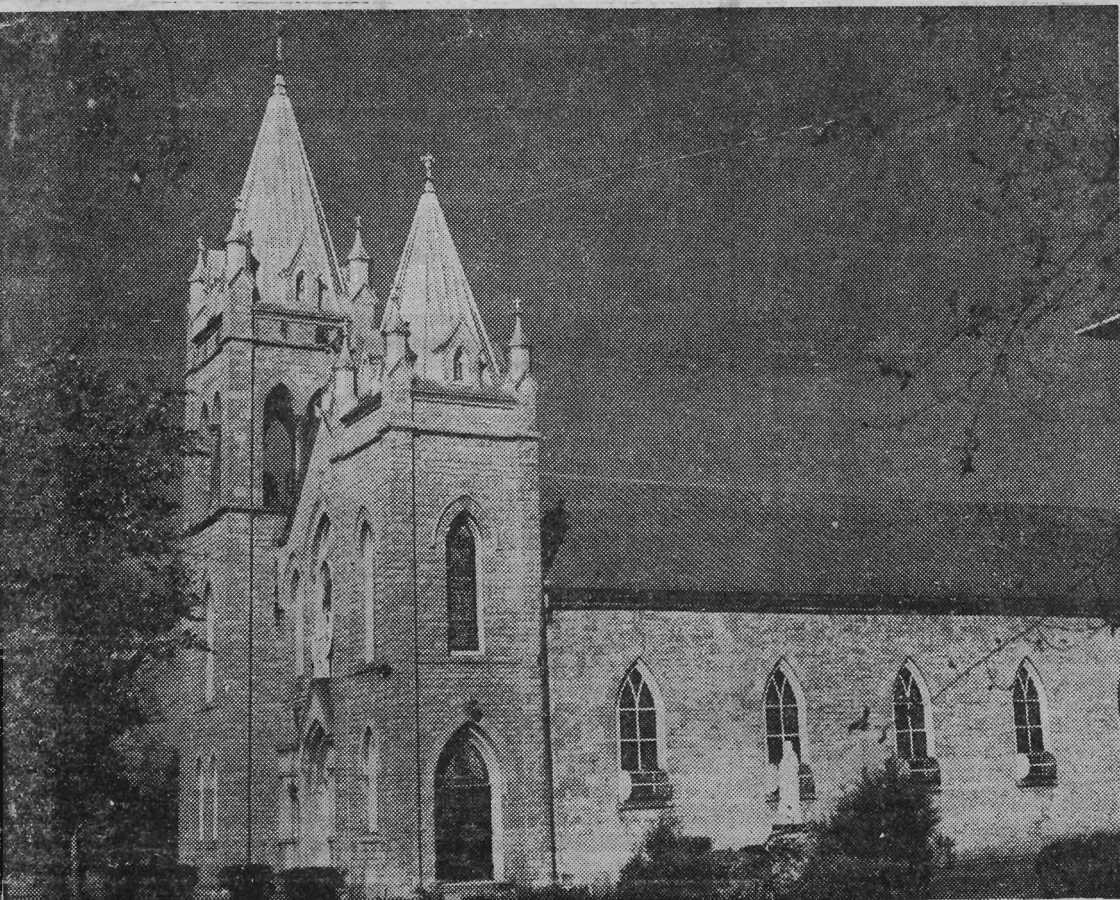


Oct 26 - 1950



# St. Gabriel's Carnival, Dinner a success

A bell-ringing success in every detail--that, briefly, sums up the St. Gabriel's parish chicken and ham dinner and carnival which was held last Sunday on the parish grounds.

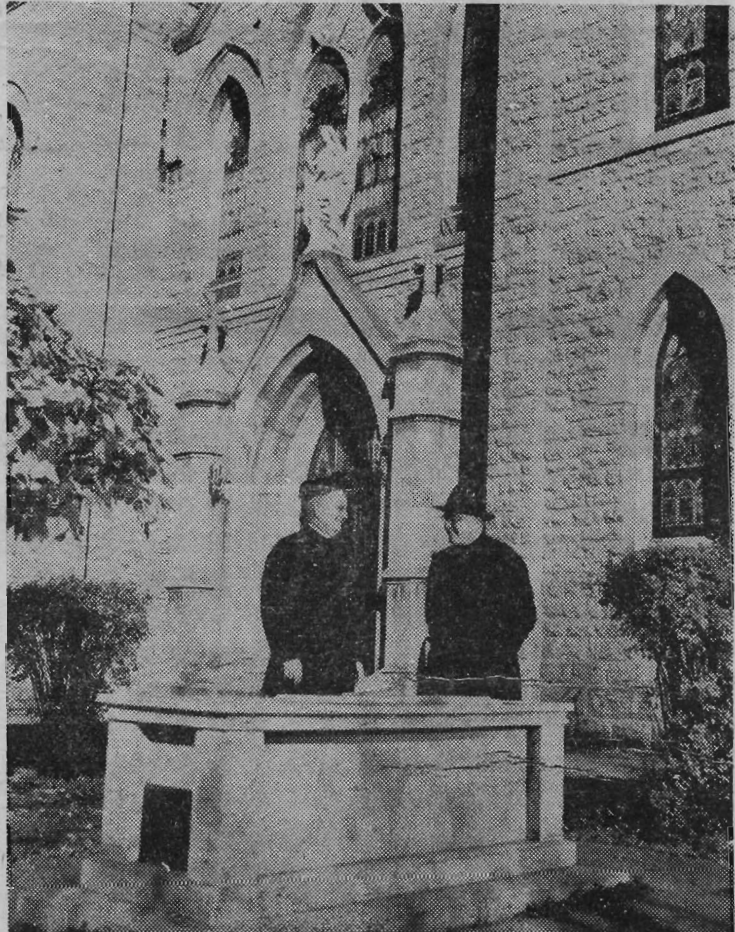
The affair got under way promptly at 11 a.m. when the parishoners and guests began pouring into the school gymnasium for dinner. Lines formed quickly, but the crowd was so tremendous that in spite of exceptionally fine service, dinners were still being served four hours later.

Meanwhile the carnival was in full swing in the parish hall. Youngsters of all ages swarmed into the gaily decorated hall to fish in the fish pond, throw darts, pitch rings and hoops and do all of the wonderful things which go with carnivals.

An auction, a church goods sale a parcel post sale, (at which everybody got more than his money's worth every time he bought a parcel); movies, a dance all went into the affair.

People from all over the country as well as the crowds visiting Campion during Homecoming weekend participated in the fun.

The carnival was the joint effort of the Holy Name Society, the Catholic Women's Club, the Altar Society and Sodality, the Young Ladies' Sodality and the Junior Holy Name Society.



The Rev. Thomas Finnegan, S. J. pastor of St. Gabriel's Church, and The Rev. Neil McManus, S. J., assistant, who was coordinator of the parish carnival and dinner last Sunday, are shown outside of the church. The 114th anniversary of the founding of St. Gabriel's was marked by the celebration. St. Gabriel's is the second oldest church in Wisconsin and the first organized parish in the state.

eligible to keep the date in mind and to get out and vote when elections are held in their communities. "Only by the participation of farmers, are these elections really democratic. The more farmers who come out to vote, the more representative will be the committee men who are elected and the more effective they will be in carrying out their responsibilities. The chairman defines an eli